

Motor Parts I

5502
9911
9448
9614
9035
(dependent
on motor)



2420
2309
9811
9757
5503
9036
(dependent
on motor)

2421
9640



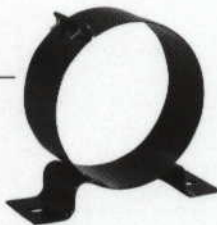
5503b
5397
9774
9037
9812

5046



7035
(per metre)

5167
5169



9592
(100 x 1000)
0396
(70/80 x 850)
0405
(60/80 x 900)
0406
(80 x 1000)
9312
(80 x 1300)

9539



air intake hose

9912

2357b



9758

2357

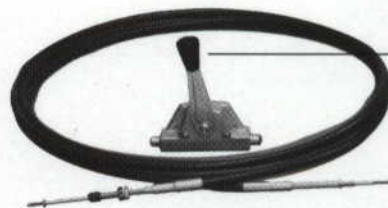


2364

9384
9848
5007
5009
5323



radiator hose



2427

2426
(5,70 m)
2466
(4,50 m)
2473
(6,80 m)



2209



2208b



9224



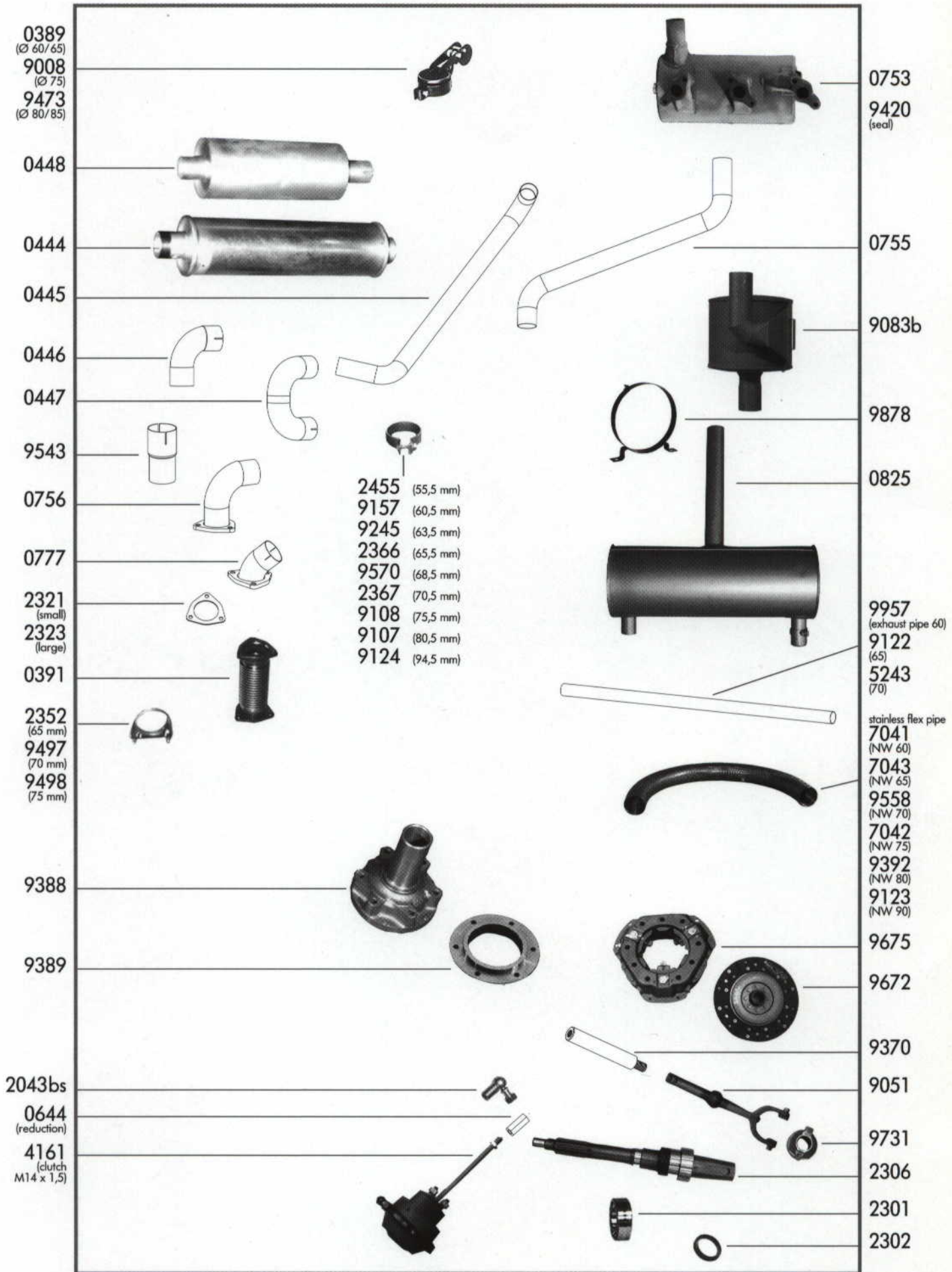
2319



4206

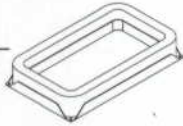


Motor Parts II



Ventilators

9855
(complete)
9855b
(rubber seal)

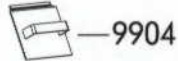


new exhaustor seal

TAZ/TSZ

(TAZII see page 23)

0410
(incl. flaps)

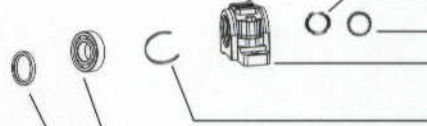
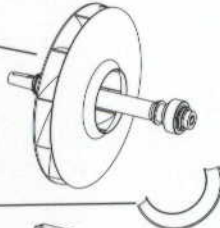


2199c

2199b

0327
(fan complete)

for fan wheel
with cyl. shaft,
please ask
for details



2312

2313

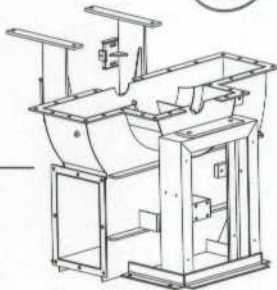
2199

2318

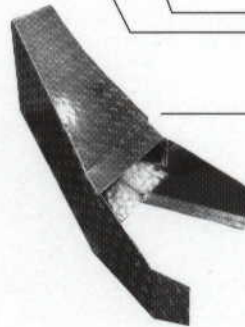
2198

2200

2340



0411
(lower
housing)



0789

(without
insulation)

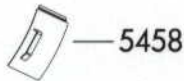
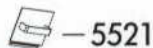
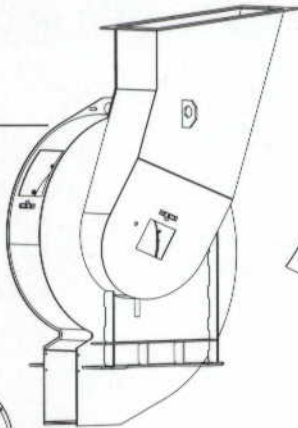
OF

5028
(complete)

9480
(seal)

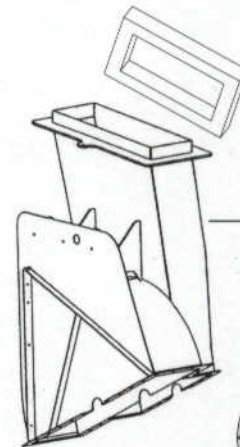


5583
(incl. flaps)



CF

9076



5632
(incl. flaps)



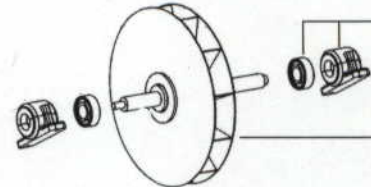
5332
5332c

please ask
for details

5266



5084g

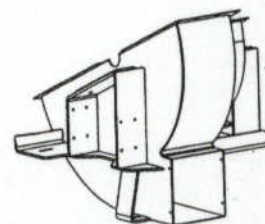


5342c
(assembly kit)

5124



5084g



5633
(incl. flaps)

Power Transmission

0368
0368b
9241

9542k

2015

2048

2362

4217
(16 ccm)
(seal kit 4383)
4217lks
(left)

4226
(8 ccm)

0181

2034

2062
(complete)

9252

9300
9300b
(complete)

9286

9688

9287

2394

9298

0832



2437

2399b

2399
(old)

2439

0651

2233

2324

0473

0488

0486

2284

0699

0407b

9945

(complete,
incl. bearings)

v-belts p.t.o.

v-belts

Description

KTP-no.

Description

KTP-no.

XPA 0982	= 2241
XPA 1032	= 2260
XPA 1060	= 9967
XPA 1132	= 2417
XPA 1157	= 2239
XPA 1180	= 2254
XPA 1207	= 2248
XPA 1232	= 2356
XPA 1257	= 2425
XPA 1282	= 9968
XPA 1332	= 9449
XPA 1357	= 9969
XPA 1382	= 2249
XPA 1400	= 9970
XPA 1457	= 9664
XPA 1557	= 2250
XPA 1582	= 2246
XPA 1607	= 2076
XPA 1632	= 2251
XPA 1657	= 2240
XPA 1682	= 2252
XPA 1700	= 2434
XPA 1732	= 2256
XPA 1757	= 2433

XPA 1782	= 2257
XPA 1832	= 2457
XPA 2082	= 9971
XPA 2232/40	= 2327
XPA 2282	= 9972
XPA 2332	= 2259
XPB 1900	= 9872
XPB 2150	= 9049
XPZ 0587	= 9849
XPZ 0862	= 2243
XPZ 1037	= 2244
XPZ 1187	= 9829
XPZ 1337	= 2253
XPZ 1387	= 2245
XPZ 1437	= 2255
XPZ 1462	= 9500
XPZ 1482	= 2401
XPZ 1512	= 2416
XPZ 1537/50	= 2237
XPZ 1562	= 9873
XPZ 1600	= 2242
XPZ 1687/1700	= 2238



TAZ II – Motor Parts, Ventilator

